

CLARINETES 2.º y 3.º

# “EL RECREO MUSICAL”

PARA BANDAS

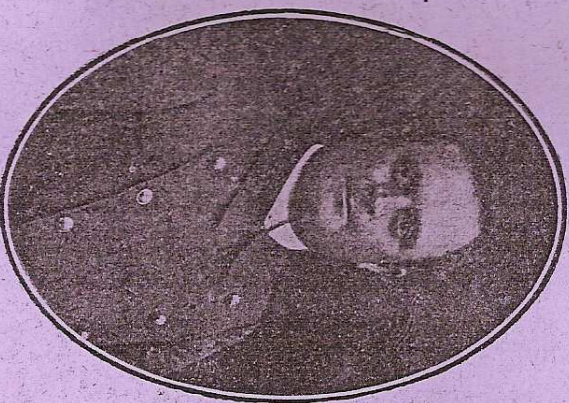
POR

LORENZO LUIS

PIÑERO (Navarra)

*Propiedad del Autor.*

Precio: 10'50 Ptas.



## SERIE INFANTIL

- |       |                             |            |
|-------|-----------------------------|------------|
| N.º 1 | EL MAESTRO . . . . .        | Paso doble |
| » 2   | EL LATIGO . . . . .         | Vals       |
| » 3   | EDUCACIÓN . . . . .         | Mazurka    |
| » 4   | PERSEVERANCIA . . . . .     | Polka      |
| » 5   | UNA Y UNA... DOS . . . . .  | Schotisch  |
| » 6   | RESPECTO Y BONDAD . . . . . | Habanera   |
| » 7   | JUGAR Y REIR . . . . .      | Vals-Diana |
| » 8   | EL RECREO . . . . .         | Jota       |

Correnzo Guis. N.º 1 - El Maestro - Pasodoble.

TROMBONES 2. OS

2 3 4 5 6 7 8  
2 3 4 5 6 7  
2 3 4 5  
2 3 4 5

D.C.

N.º 2 - El Látego - Vals.

2 3 4 5 6 7 8  
2 3 4 5 6 7  
2 3 4 5 6 7  
2 3 4 5 6 7 8

N.º 3 — Educación - Mazurka.

Musical score for Mazurka N.º 3. It consists of two staves. The top staff is in 3/4 time with a key signature of one flat (B-flat). It begins with a treble clef, a key signature change to one flat, and a dynamic marking of *f*. The melody features a first ending marked with a '1' and a repeat sign. The bottom staff is in bass clef with a key signature of one flat and a dynamic marking of *f*. It contains a bass line with a first ending marked with a '1' and a repeat sign. The piece concludes with a double bar line and the initials 'D.C.' (Da Capo).

N.º 4 — Perseverancia - Polka.

Musical score for Polka N.º 4. It consists of two staves. The top staff is in bass clef with a key signature of one flat and a dynamic marking of *f*. It features a first ending marked with a '1' and a repeat sign. The bottom staff is in bass clef with a key signature of one flat and a dynamic marking of *f*. It contains a bass line with a first ending marked with a '1' and a repeat sign. The piece concludes with a double bar line and the initials 'D.C.' (Da Capo).

N.º 5 —

Partial musical score for N.º 5, showing the beginning of two staves in bass clef with a key signature of one flat.

N.º 6 —

Partial musical score for N.º 6, showing the beginning of two staves in bass clef with a key signature of one flat.

N.º 5 — Una y una dos - Schottisch.

Musical score for N.º 5, 'Una y una dos - Schottisch'. The score is written in a single system on a grand staff (treble and bass clefs). It begins with a treble clef, a key signature of one flat (B-flat), and a 2/4 time signature. The music features a rhythmic pattern of eighth and sixteenth notes, characteristic of a Schottisch. There are dynamic markings such as *f* (forte) and *p* (piano). The piece concludes with a double bar line and the initials 'D.C.a.s.' written below the staff.

N.º 6 — Respeto y Bondad - Habanera.

Musical score for N.º 6, 'Respeto y Bondad - Habanera'. The score is written in a single system on a grand staff (treble and bass clefs). It begins with a treble clef, a key signature of one flat (B-flat), and a 2/4 time signature. The music features a rhythmic pattern of eighth and sixteenth notes, characteristic of a Habanera. There are dynamic markings such as *f* (forte) and *p* (piano). The piece concludes with a double bar line and the initials 'D.C.a.s.' written below the staff.

N.º 7 — Jugar y Reir — Vals - Diana.

Musical score for N.º 7, 'Jugar y Reir'. The score is written on a single staff in 2/4 time, starting with a treble clef and a key signature of one flat (B-flat). The piece begins with a piano (*p*) dynamic. The melody features a series of eighth and sixteenth notes. A section of the score is marked with a '2 3 4 5 6 7 8' above the notes, indicating a sequence of eighth notes. The piece concludes with a double bar line and the initials 'D.C.' (Da Capo).

N.º 8 — El Recreo - Jota.

Musical score for N.º 8, 'El Recreo'. The score is written on a single staff in 2/4 time, starting with a treble clef and a key signature of one flat (B-flat). The piece begins with a forte (*f*) dynamic. The melody is characterized by a series of eighth and sixteenth notes. A section of the score is marked with a 'f (TIN) p' above the notes, indicating a change in dynamics. The piece concludes with a double bar line and the initials 'D.C.' (Da Capo).